



haller

Artemisia the One Health plant

- in human health
- in animal health
- in environmental health

March 2024



A sector full of promise: in human health

[Scientific publications on maison-artemisia.org](http://maison-artemisia.org)



- **Anti-parasitic:**
 - malaria
 - schistosomiasis
 - toxoplasmosis
- **Anti-bacterial:**
 - Buruli ulcer
 - co-infection of Lyme disease
 - pulmonary tuberculosis
- **Anti-inflammatory:**
 - osteoarthritis
 - sensitive skin
- **Relieves painful periods**



A sector full of promise: in animal health

[Scientific publications on maison-artemisia.org](http://maison-artemisia.org)



- **Anti-parasitic:** coccidiosis, toxoplasmosis, leishmaniosis, ...
- **Anti bacterial:** alternative to antibiotics for broilers
- **Improves the quality of the flesh**
- **Promotes weight gain**



A sector full of promise: in environmental health

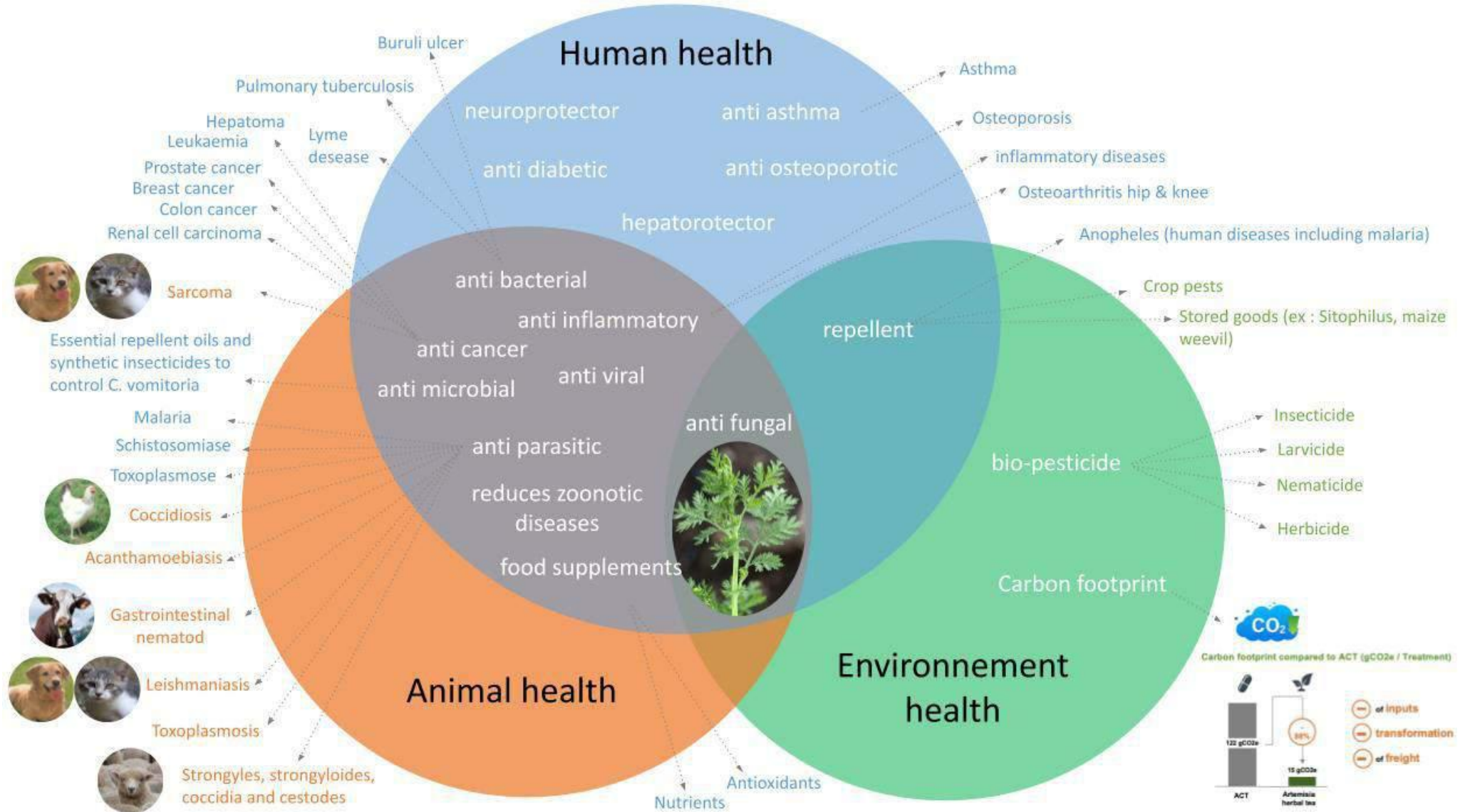
Scientific publications on Maison de l'Artemisia



- **Natural biopesticide:**
 - insects
 - larvae
 - weeds
 - non persistent
- **Repellent:**
 - mosquitos
 - crop pests
 - stored commodity pests (corn weevil, sitophilus)
- **Safe for humans**



The One Health plant



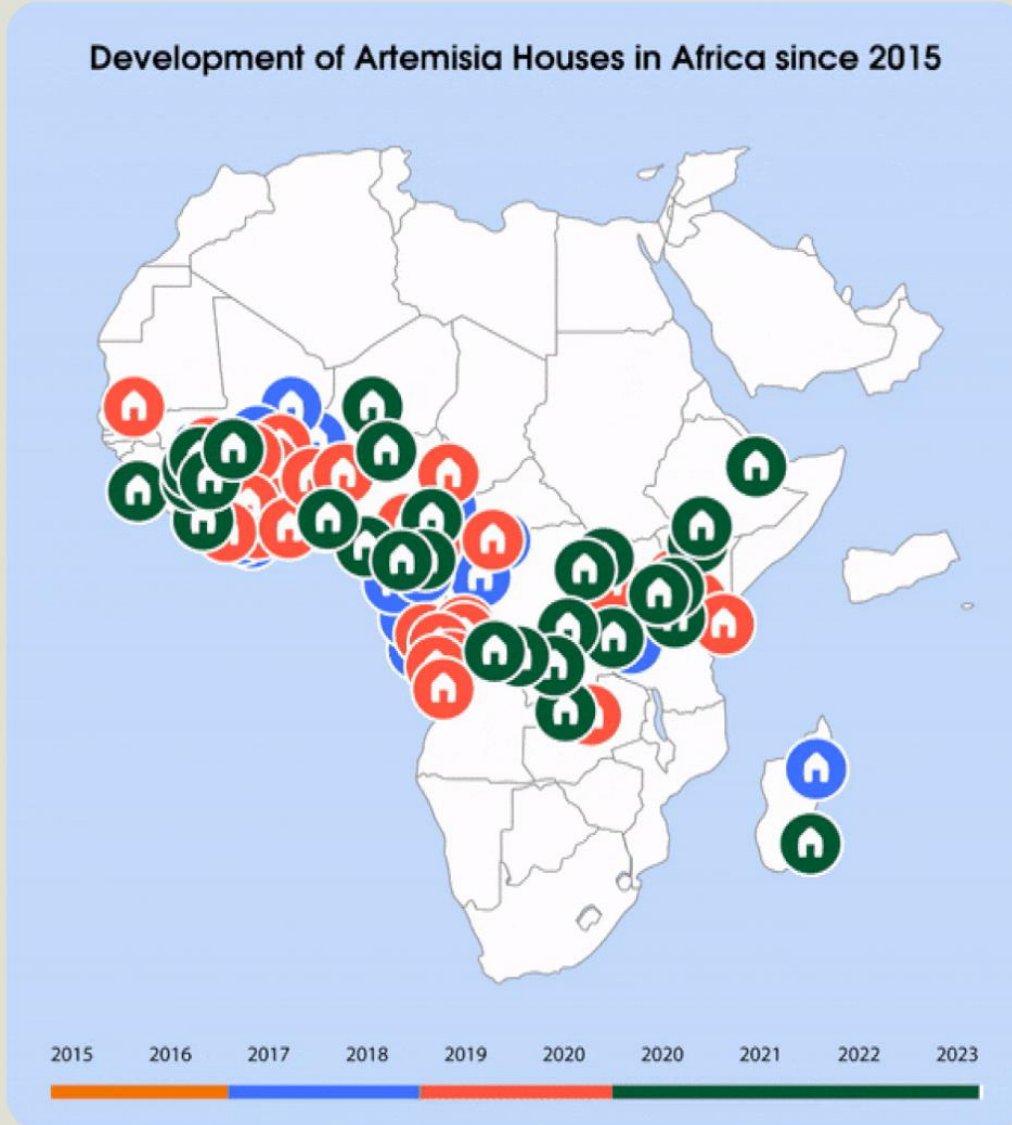


An exemplary NGO

- global presence
- ethical charter
- scientific and medical network



An extensive network in Africa



28 countries

130 Houses
of Artemisia

multidisciplinary competence
centers (farmers, pharmacists,
doctors, etc.)



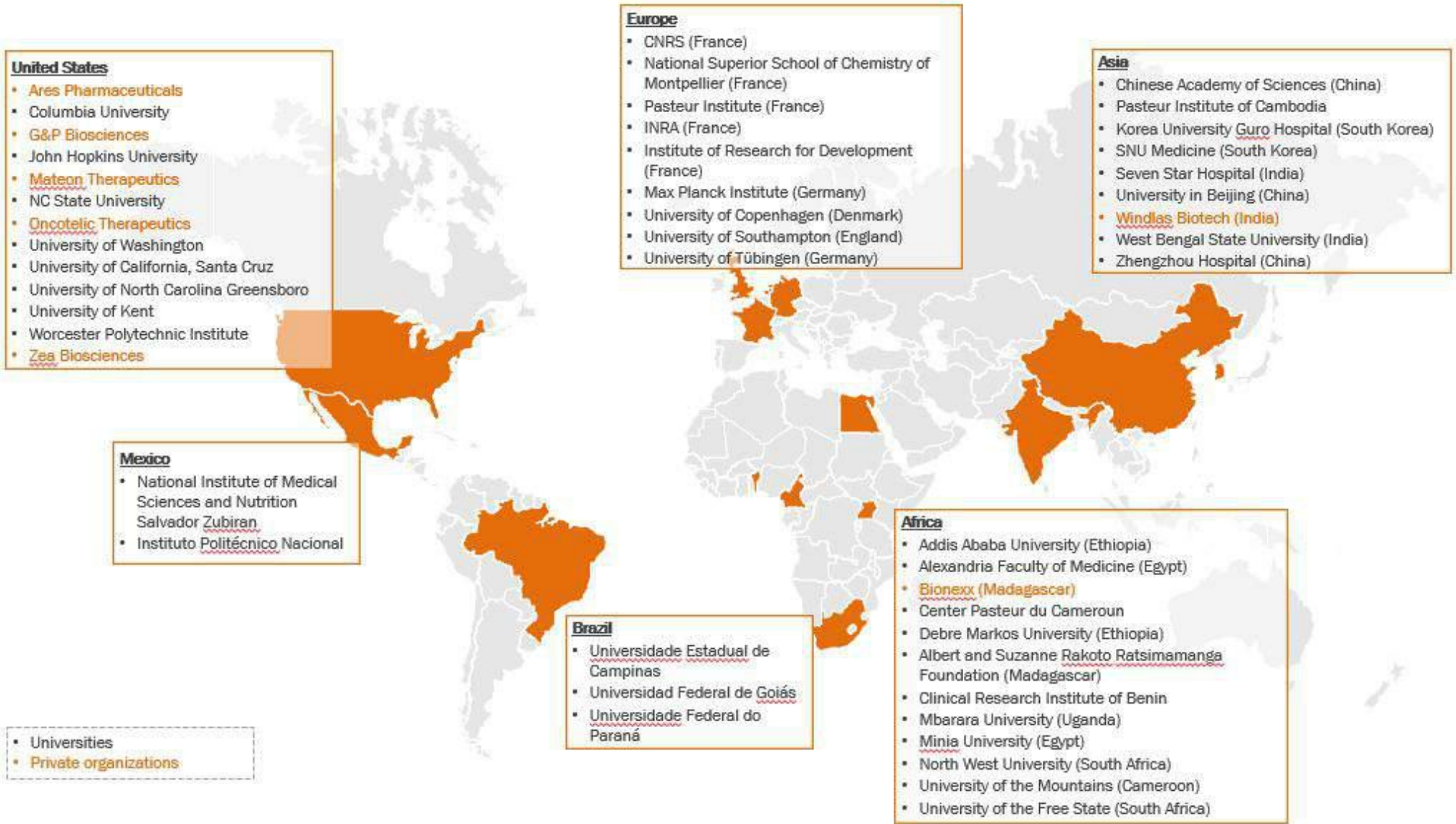
A network linked by an ethical charter

1. Grow Artemisia in an **ecologically responsible way**, in **organic agriculture** and without wasting water
2. Respecting **hygiene and quality** standards
3. **Share** the added value **equitably**
4. **Access to the greatest number of people**, especially the most disadvantaged
5. **Harmonize** communication
6. **Share** knowledge, seeds, know-how and experiences
7. Develop a harmonized and accessible **training** offer





A network connected with researchers around the world





Houses of Artemisia impacts:

- economic
- social
- environmental

Artemisia impacts: economic impacts



- **Reduction of health expenses**
up to 1/10th of revenue
- **Reduction of malaria-related absenteeism**
- **New local agricultural sector:**
 - job creation
 - additional revenues
 - women's employment
 - wide range of products (herbal teas, creams and soaps, animal feed, biopesticide)
- **Increase in agricultural yields**
- **Increase in livestock yields:**
 - lower drug expenditures
 - better quality



Artemisia impacts: social impacts

- Decline in the incidence of malaria in children:
 - Reducing school absenteeism
 - Increased attention span
 - Decrease in under-five mortality
- Better general health, strengthening of the immune system, lower anemia
- Valuation of local knowledge and resources / autonomy
- Women's empowerment

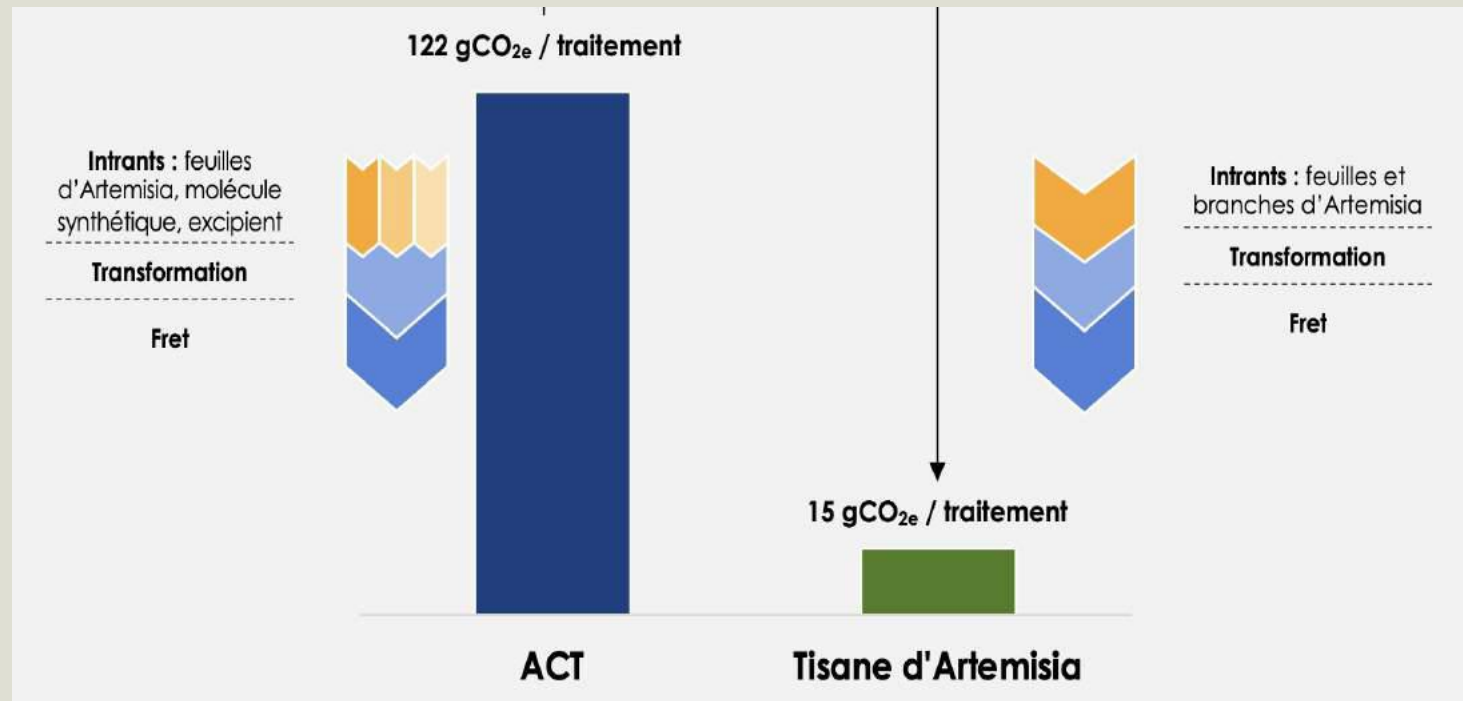


Artemisia impacts: environmental impacts



Carbone 4 analyse:

Artemisia tea emits 88% less carbon than standard malaria treatment (ACT)



- **Lower carbon emissions** from the pharmaceutical and phytosanitary industries (human, livestock, crops)
- **Less emissions from the transport**
- **Reduction of chemical pollution of soils and water**



**The Artemisia is a
complementary solution :**
local, effective, accessible, sustainable

**We are developing new partnerships to
increase our impact**



Partnership: La Maison de l'Artemisia & Haller

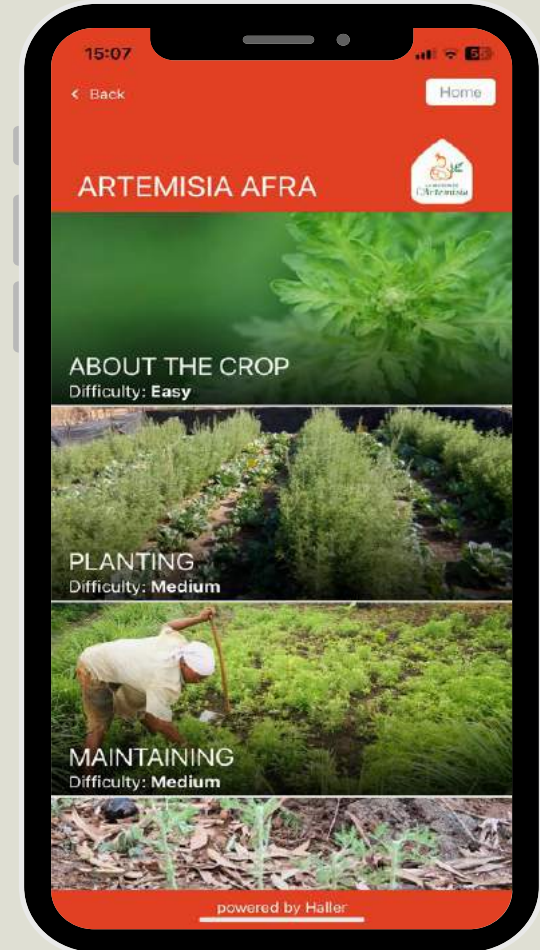
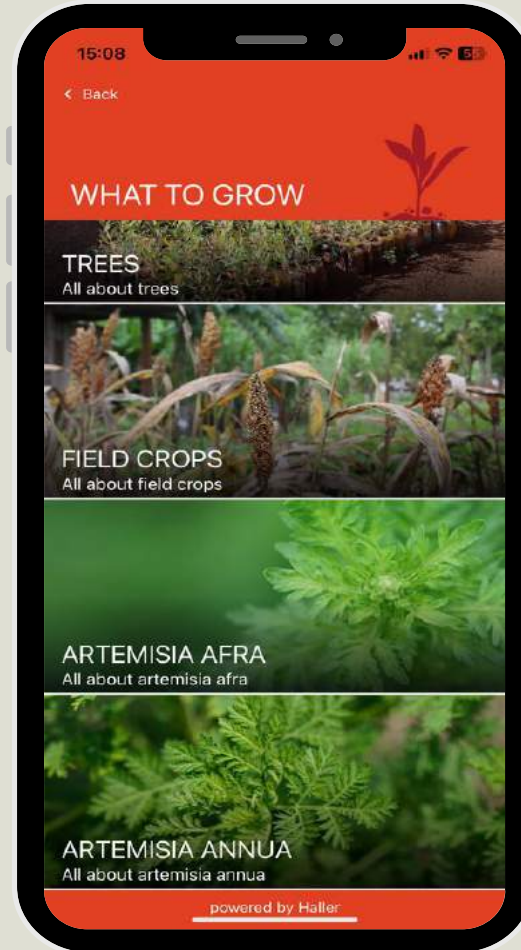
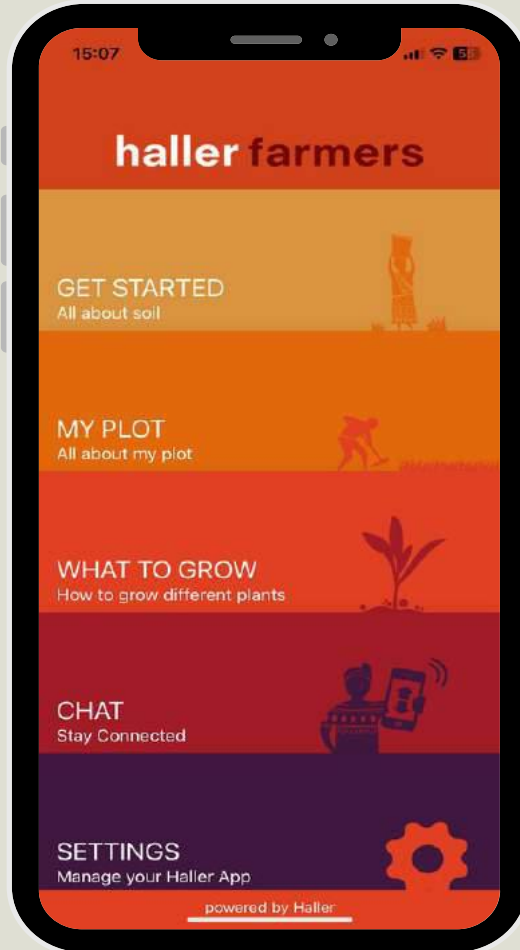
Haller is a UK-registered charity and Kenyan NGO supporting smallholder farmers in restoring landscapes and building self-sustaining communities through regenerative agriculture and sustainable livelihood solutions.

Haller has created the **Haller Farmers App**, harnessing the power of mobile technology to share climate-smart farming expertise with smallholders in rural regions across Africa.

Haller & La Maison de l'Artemisia have partnered to leverage The Haller Farmers App to share regenerative agricultural knowledge and expertise on the sustainable production of Artemisia with vulnerable farming communities.



Partnership: La Maison de l'Artemisia & Haller





WE SEARCH

- **Partnerships** to develop the sector
- **Funding** to continue research and develop the network



www.maison-artemisia.org



haller

THANK YOU