



Artemisia annua and *Artemisia afra*
a sector full of promise:

- in human health
- in animal health
- in environmental health



A sector full of promise (1/3)

In human health

(scientific publications on maison-artemisia.org)



- **Anti-parasitic:**
 - malaria
 - schistosomiasis
 - toxoplasmosis
- **Anti-bacterial:**
 - Buruli ulcer
 - co-infection of Lyme disease
 - pulmonary tuberculosis
- **Anti-inflammatory:**
 - osteoarthritis
 - Sensitive skin
- **Relieves** painful periods



A sector full of promise (2/3)

In animal health

(scientific publications on maison-artemisia.org)



- **Anti-parasitic:** coccidiosis, toxoplasmosis, leishmaniosis, ...
- **Improves the quality of the flesh**
- **Promotes weight gain**





A sector full of promise (3/3)

In environmental health

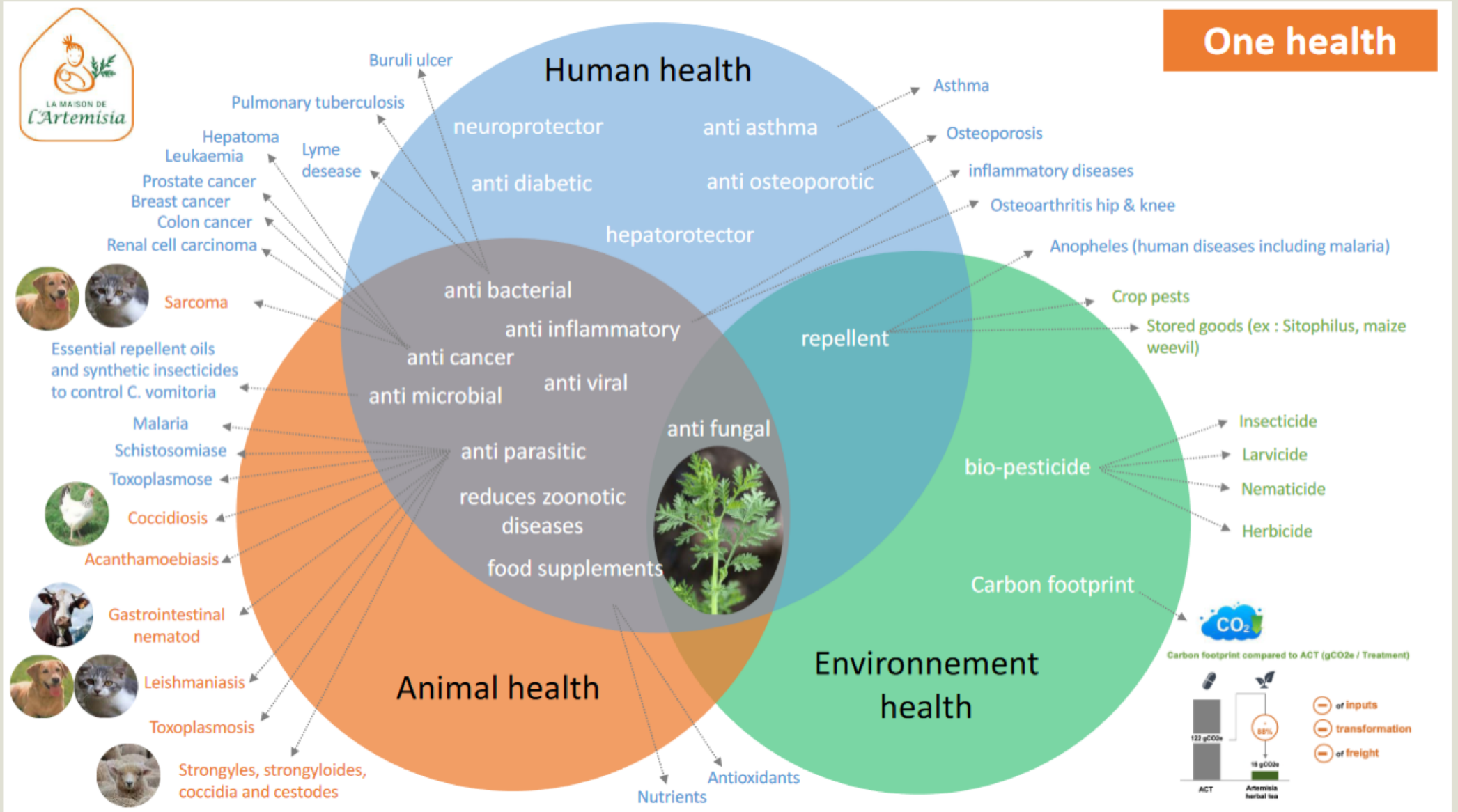
(scientific publications on maison-artemisia.org)



- **Natural biopesticide:**
 - insects
 - larvae
 - weeds
 - non persistent
- **Repellent:**
 - mosquitos
 - crop pests
 - stored commodity pests
(corn weevil, sitophilus)
- **Safe for humans**



In a nutshell: “Artemisia, the One Health plant”



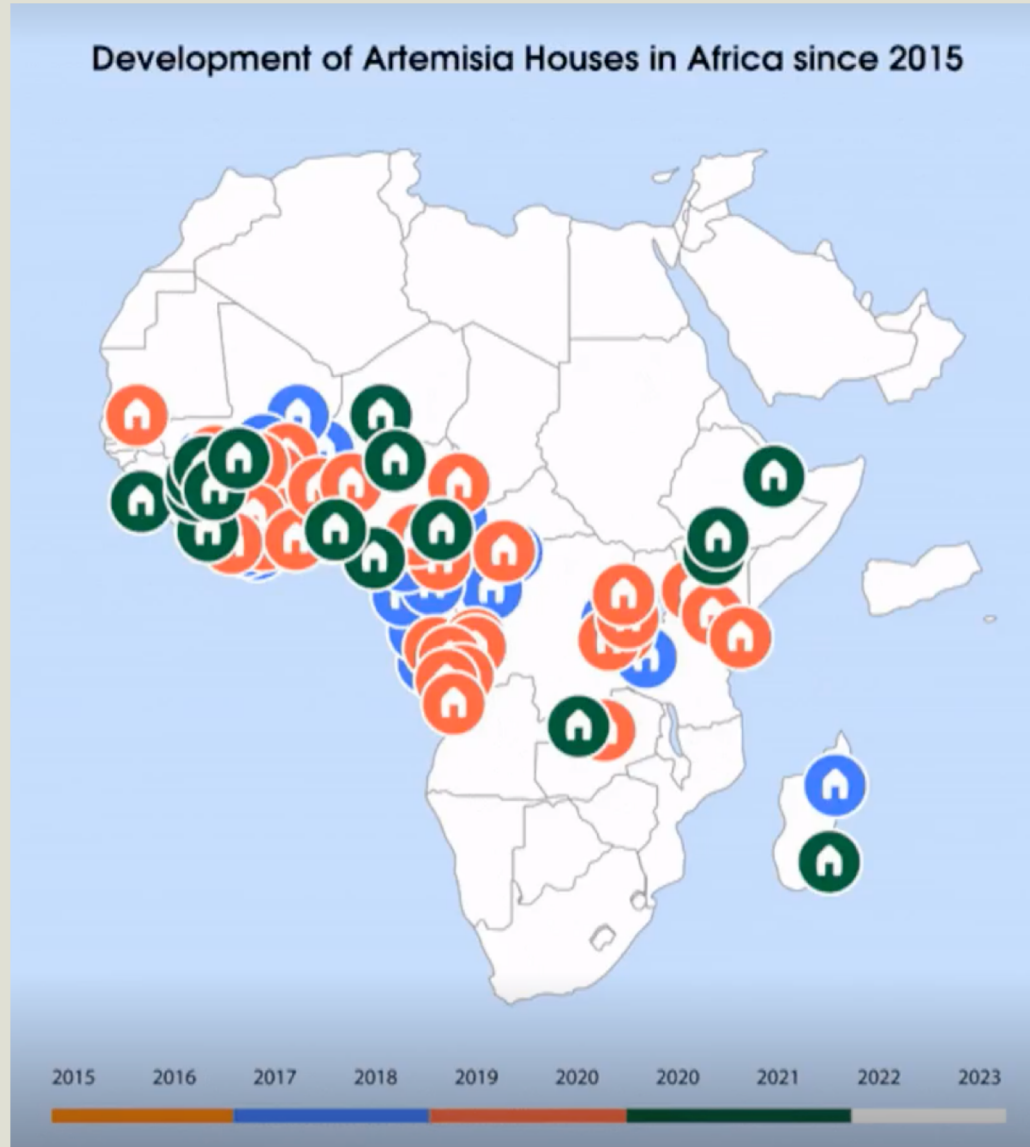


An exemplary NGO

- global presence
- ethical charter
- scientific and medical network



An extensive network in Africa



28 countries

130 Houses
of Artemisia

multidisciplinary competence
centers (farmers, pharmacists,
doctors, etc.)



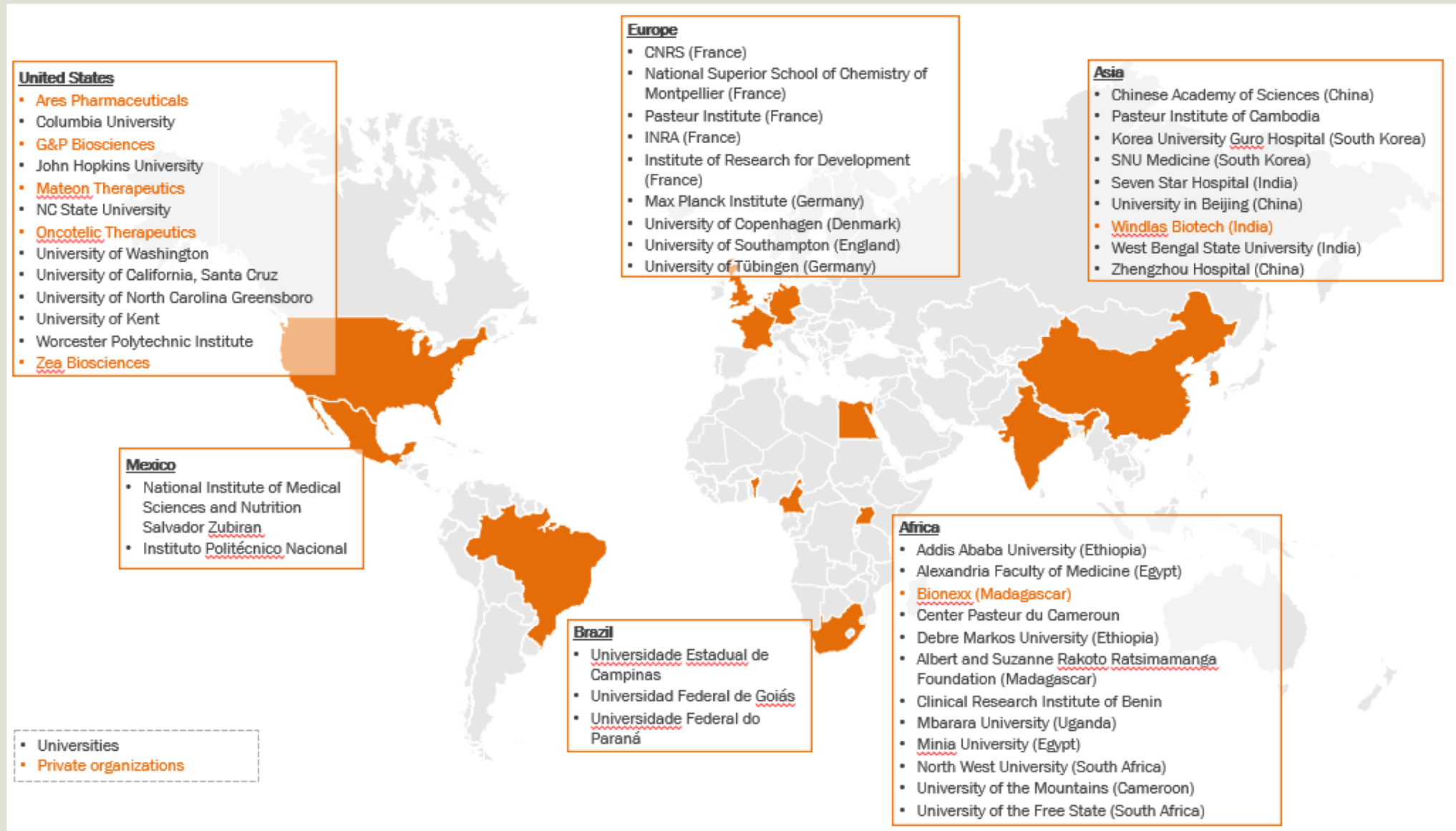
A network linked by an ethical charter

1. Grow Artemisia in an **ecologically responsible way**, in **organic agriculture** and without wasting water.
2. Respecting **hygiene and quality** standards
3. Share the **added value** equitably
4. **Access to the greatest number of people**, especially the most disadvantaged
5. **Harmonize** communication
6. **Share** knowledge, seeds, know-how and experiences
7. Develop a harmonized and accessible **training** offer





A network connected with researchers around the world





Houses of Artemisia impacts:

- economic
- social
- environmental



Artemisia impacts (1/3)

Economic impacts



- **Reduction of health expenses**
up to 1/10th of revenue
- **Reduction of malaria-related absenteeism**
- **New local agricultural sector:**
 - job creation
 - additional revenues
 - women's employment
 - wide range of products (herbal teas, creams and soaps, animal feed, biopesticide)
- **Increase in agricultural yields**
- **Increase in livestock yields:**
 - lower drug expenditures
 - better quality



Artemisia impacts (2/3)

Social impacts

- Decline in the incidence of malaria in children:
 - Reducing school absenteeism
 - Increased attention span
 - Decrease in under-five mortality
- Better general health, strengthening of the immune system, lower anemia
- Valuation of local knowledge and resources / autonomy
- Women's empowerment

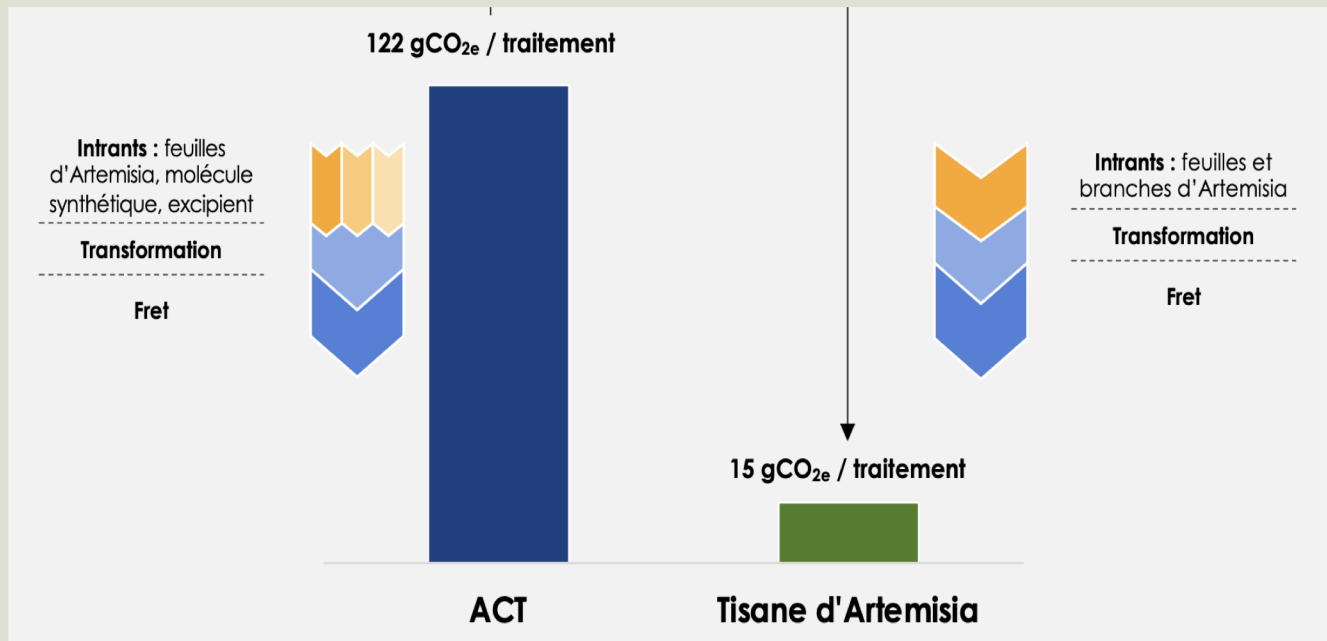




Artemisia impacts (3/3)

Environmental impacts

Carbone 4 analyse:
Artemisia tea emits 88% less carbon
than standard malaria treatment (ACT)



- **Lower carbon emissions** from the pharmaceutical and phytosanitary industries (human, livestock, crops)
- **Less emissions from the transport**
- **Reduction of chemical pollution of soils and water.**



Artemisia, a complementary solution

local

effective

accessible

sustainable



WE SEARCH

- Partnerships to develop the sector
- Funding to continue research and develop the network



www.maison-artemisia.org



THANK YOU